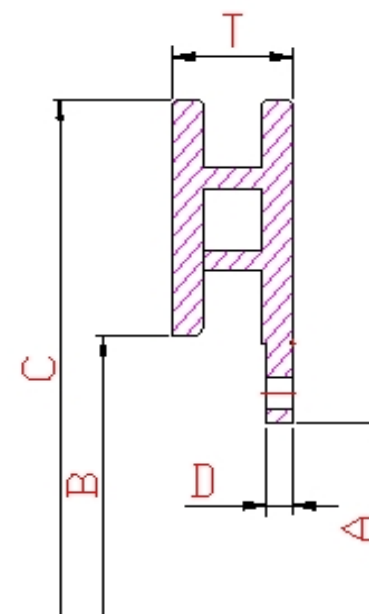
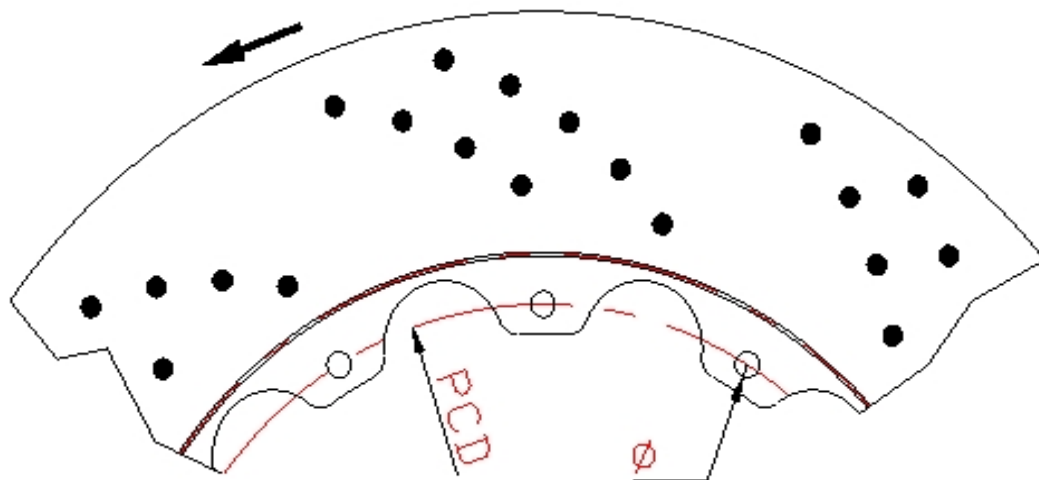


KEMA Enterprise Co., Ltd.

No. 171-2, Nanbei 6th Rd., Da-an Dist., Taichung 43964, Taiwan

Tel:+886-4-2688-9516 Fax:+886-4-2680-4700 www.x-kema.com

Rotor Specification



Unit: mm

KEMA Rotor No.	Item No.	A	B	C	D	T	PCD	Mounting Hole Number	Mounting Hole Spec.	Mounting Bolt Spec.
		Inside Flange Dia.	Eye Dia.	Outside Dia.	Mtg Flange Thickness	Thickness				
BD034-F	BD286X22-F	156	180	286	7	22	167	12	8 x 6.45 ± 0.5	M6 x P1.0
BD035-F	BD304X22-F	156	196	304	7	22	167	12	8 x 6.45 ± 0.5	M6 x P1.0
BD009-F	BD286X26-F	156	180	286	7	26	167	12	8 x 6.45 ± 0.5	M6 x P1.0
BD007-F	BD304X26-F	165	196	304	7	26	179	12	8 x 6.45 ± 0.5	M6 x P1.0
BD039-F	BD330X28-F	175	219	330	7	28	190.5	12	8 x 6.45 ± 0.5	M6 x P1.0
BD001-F	BD330X32-F	175	214	330	7	32	190.5	12	9 x 9 ± 0.5	M8 x P1.25
BD027-F	BD345X32-F	175	229	345	7	32	190.5	12	9 x 9 ± 0.5	M8 x P1.25
BD003-F	BD356X32-F	202	240	356	7	32	215.9	12	9 x 9 ± 0.5	M8 x P1.25

KEMA Enterprise Co., Ltd.

No. 171-2, Nanbei 6th Rd., Da-an Dist., Taichung 43964, Taiwan

Tel:+886-4-2688-9516 Fax:+886-4-2680-4700 www.x-kema.com

BD052-F	BD365X32-F	218	249	365	7	32	232	12	9 x 9± 0.5	M8 x P1.25
BD006-F	BD380X32-F	224	264	380	7	32	240	12	9 x 9± 0.5	M8 x P1.25
BD098-F	BD356X34-F	202	232	356	7	34	215.9	12	9 x 9± 0.5	M8 x P1.25
BD075-F	BD365X34-F	202	239	365	8	34	215.9	12	9 x 9± 0.5	M8 x P1.25
BD076-F	BD380X34-F	224	257	380	7.5	34	240	12	9 x 9± 0.5	M8 x P1.25
BD005-F	BD380X34-F	202	238	380	8.5	34	215.9	12	9 x 9± 0.5	M8 x P1.25
BD055-F	BD405X36-F	220	263	405	8.5	36	240	12	9 x 9± 0.5	M8 x P1.25
BD040-F	BD430X36-F	232	287	430	8.5	36	250	12	9 x 9± 0.5	M8 x P1.25
BD042-R	BD286X22-R	168	194	286	7	22	179	12	8 x 6.45 ± 0.5	M6 x P1.0
BD041-R	BD304X22-R	185	212	304	6	22	196	12	8 x 6.45 ± 0.5	M6 x P1.0
BD002-R	BD330X28-R	202	233	330	7	28	215.9	12	8 x 6.45 ± 0.5	M6 x P1.0
BD048-R	BD345X28-R	202	255	345	7	28	215.9	12	8 x 6.45 ± 0.5	M6 x P1.0
BD004-R	BD356X28-R	202	262	356	7	28	215.9	12	8 x 6.45 ± 0.5	M6 x P1.0
BD004-RA	BD356X28-R*	220	266	356	7	28	233	12	8 x 6.45 ± 0.5	M6 x P1.0
BD003-F/R	BD356X32-R	202	240	356	7	32	215.9	12	9 x 9 ± 0.5	M6 x P1.0
BD0072-R	BD360X28-R	245	271	360	7	28	258	12	8 x 6.45 ± 0.5	M6 x P1.0
BD094-R	BD365X32-R	224	255	365	7	32	240	12	9 x 9 ± 0.5	M6 x P1.0
BD0077-R	BD365X30-R	245	271	365	7	30	258	12	8 x 6.45 ± 0.5	M6 x P1.0
BD006-F/R	BD380X32-R	224	264	380	7	32	240	12	9 x 9 ± 0.5	M6 x P1.0
BD047-R	BD380X32-R	245	272	380	7	32	258	12	8 x 6.45 ± 0.5	M6 x P1.0
BD046-R	BD405X34-R	250	293	405	7.5	34	265	12	9 x 9± 0.5	M8 x P1.25
BD051-R	BD330X28-R	185	220	330	6.5	28	198	12	8 x 6.45 ± 0.5	M6 x P1.0
BD062-R	BD345X28-R	202	233	345	7	28	215.9	12	8 x 6.45 ± 0.5	M6 x P1.0
BD068-R	BD356X28-R	202	244	356	7	28	215.9	12	8 x 6.45 ± 0.5	M6 x P1.0

Remarks: *, ** is for big OE drum diameter

後加大碟

BD064-R	BD308X10-R	168	218	308	7	10	183.5	12	8 x 6.45 ± 0.5	M6 x P1.0
BD069-R	BD325X10-R	175	220	325	7	10	190.5	12	8 x 6.45 ± 0.5	M6 x P1.0
BD104-R	BD350X10-R	202	248	350	7	10	215.9	12	8 x 6.45 ± 0.5	M6 x P1.0
BD063-R	BD308X12-R	168	212	308	8	12	186	12	8 x 6.45 ± 0.5	M6 x P1.0

KEMA Enterprise Co., Ltd.

No. 171-2, Nanbei 6th Rd., Da-an Dist., Taichung 43964, Taiwan
Tel:+886-4-2688-9516 Fax:+886-4-2680-4700 www.x-kema.com

Page 3 of 3

BD066-R	BD325X12-R	175	214	325	8	12	190.5	12	8 x 6.45 ± 0.5	M6 x P1.0
BD090-R	BD350X12-R	202	237	350	8	12	215.9	12	8 x 6.45 ± 0.5	M6 x P1.0
BD114-R	BD330X18-R	182	224	330	6.5	18	196	12	8 x 6.45 ± 0.5	M6 x P1.0
BD115-R	BD356X18-R	198	250	356	6.5	18	212	12	8 x 6.45 ± 0.5	M6 x P1.0
BD135-R	BD372X18-R	218	261	372	6.5	18	233	12	9 x 9 ± 0.5	M6 x P1.0
BD081-R	BD350X22-R	188	234	350	7	22	203	12	8 x 6.45 ± 0.5	M6 x P1.0
BD079-R	BD372X22-R	218	258	372	7	22	233	12	9 x 9 ± 0.5	M6 x P1.0
BD080-R	BD350X24-R	178	216	350	7	24	190.5	12	8 x 6.45 ± 0.5	M6 x P1.0
BD078-R	BD372X24-R	202	238	372	7	24	215.9	12	9 x 9 ± 0.5	M6 x P1.0
BD107-R	BD350X26-R	188	234	350	7	26	203	12	8 x 6.45 ± 0.5	M6 x P1.0
BD106-R	BD372X26-R	218	256	372	7.5	26	233	12	9 x 9 ± 0.5	M6 x P1.0